



Government of India
Ministry of Earth Sciences
India Meteorological Department



Press Release
Date: 04th September, 2025
Time of Issue: 1330 hours IST

Subject: i) Heavy to very heavy rainfall likely over Gujarat state till 07th September with possibility of Extremely heavy falls at isolated places over Gujarat Region during 04th-06th and Saurashtra & Kutch on 06th & 07th September, 2025.
ii) Heavy to very heavy rainfall likely over Konkan & Goa, Madhya Maharashtra and West Madhya Pradesh on 04th & 05th; over East Rajasthan from 04th to 07th September, 2025.

Realised weather during past 24 hours till 0830 hours IST of today, the 04th September, 2025:

- ❖ **Heavy to very heavy rainfall with Extremely heavy rainfall (≥ 21 cm)** has been recorded at isolated places over West Madhya Pradesh and Odisha.
- ❖ **Very heavy rainfall (12-20 cm)** has been recorded at isolated places over Jammu-Kashmir, West Uttar Pradesh and Chhattisgarh.
- ❖ **Heavy rainfall (7-11 cm)** has been recorded at isolated places over Himachal Pradesh, Uttarakhand, Haryana, East Rajasthan, Arunachal Pradesh, Gujarat Region, Coastal Andhra Pradesh, Kerala and South Interior Karnataka.

For more details of realised weather, kindly refer [Annexure I](#).

i. Weather Systems, Forecast and Warnings (refer to Annexure II & III):

- ❖ The Monsoon trough at mean sea level runs south of its normal position and extend upto lower tropospheric levels.
- ❖ Yesterday's well marked low pressure area moved west-northwestwards and weakened into a low pressure area over north Chhattisgarh and neighbourhood at 0530 hrs IST of today, the 04th September. It moved slightly west-northwestwards & lay over north Chhattisgarh & adjoining East Madhya Pradesh at 0830 hrs IST of today, the 04th September, 2025. The associated cyclonic circulation extended upto middle tropospheric levels tilting southwestwards with height. It is likely to move west-northwestwards across East Madhya Pradesh during next 24 hours.
- ❖ An **upper air cyclonic circulation** lies over southwest Madhya Pradesh in lower & middle tropospheric levels.
- ❖ A **trough** runs from northeast Arabian Sea to northwest Bay of Bengal in lower & middle tropospheric levels.
- ❖ A **Western Disturbance** seen as a trough in middle & upper tropospheric westerlies with its axis at 5.8 km above mean sea level roughly along Long. 74°E to the north of Lat. 28°N.
- ❖ An **upper air cyclonic circulation** lies over northeast Assam in lower tropospheric levels.

Under the influence of these systems, the following weather is likely:

West India:

- ❖ **Extremely heavy rainfall** very likely at isolated places over Gujarat Region during 04th-06th; Saurashtra & Kutch on 06th & 07th September.
- ❖ **Isolated heavy rainfall** is very likely over Konkan & Goa, Madhya Maharashtra during 04th-06th; Marathwada on 04th; Gujarat State on 08th September with **very heavy rainfall over Konkan & Goa, Madhya Maharashtra, Saurashtra & Kutch on 04th & 05th; Gujarat Region on 07th September.**
- ❖ Light to moderate rainfall accompanied with thunderstorm & lightning at a few/many places very likely over the region during next 5 days.

Northwest India:

- ❖ Isolated **heavy rainfall** likely to continue Uttarakhand and Rajasthan during 04th-08th; Punjab on 04th & 10th; Haryana, Chandigarh on 04th, 05th & during 08th-10th; East Uttar Pradesh on 09th September with **isolated very heavy rainfall very likely over West Rajasthan on 06th & 07th; East Rajasthan during 04th-07th September.**
- ❖ Light to moderate rainfall accompanied with thunderstorm & lightning at a few/many places very likely over the region during next 7 days.

East & Central India:

- ❖ Isolated **heavy rainfall** likely over West Madhya Pradesh during 04th-06th; East Madhya Pradesh on 04th & 05th; Vidarbha, Chhattisgarh & Odisha on 04th; Andaman & Nicobar Islands on 06th & 07th; Sub-Himalayan West Bengal & Sikkim on 05th & during 07th-10th; Bihar during 08th-10th September with **isolated very heavy rainfall over West Madhya Pradesh on 04th & 05th September.**
- ❖ Light to moderate rainfall at most/many places accompanied with thunderstorm & lightning likely over the region during next 7 days.

Northeast India:

- ❖ Isolated **heavy rainfall** likely over Assam & Meghalaya, Nagaland, Manipur, Mizoram & Tripura during 04th-07th and Arunachal Pradesh on 04th & during 06th-10th September.
- ❖ Light/moderate rainfall at many places accompanied with thunderstorm & lightning likely during next 7 days.

South Peninsular India:

- ❖ Isolated **heavy rainfall** likely over Kerala & Mahe on 04th; Tamil Nadu on 08th & 09th September.
- ❖ Strong surface winds (speed reaching 30-40 kmph) very likely over Coastal Andhra Pradesh & Yanam, Rayalaseema during next 5 days.
- ❖ Light to moderate rainfall accompanied with thunderstorm & lightning at a few places likely over the region during next 5 days.

Fishermen warning:

Fishermen are advised not to venture into the following from 04th to 09th September 2025 to the following Areas:

Arabian Sea (AS)

Along and off the Somalia coasts; some parts of westcentral, eastcentral & southwest Arabian Sea during 04th to 09th September and Oman coasts on 4th & 8th September, most parts of northeast Arabian Sea during 5th to 09th; along and off south Gujarat, Konkan & Goa coasts on 4th September and entire Gujarat coast during 05th to 09th September; off north Konkan coasts during 5th to 08th September.

Bay of Bengal (BoB):

most parts of southwest Bay of Bengal during 4th to 06th; over Gulf of Mannar during 04th to 06th September and adjoining few parts of Comorin area during 4th to 09th September.

ii. Weather conditions and forecast over Delhi/NCR during 04th September to 07th September 2025 (Annexure IV)

For more details, kindly refer National Weather Bulletin:

https://mausam.imd.gov.in/responsive/all_india_forecast_bulletin.php

For District wise warnings refer: <https://mausam.imd.gov.in/responsive/districtWiseWarningGIS.php>

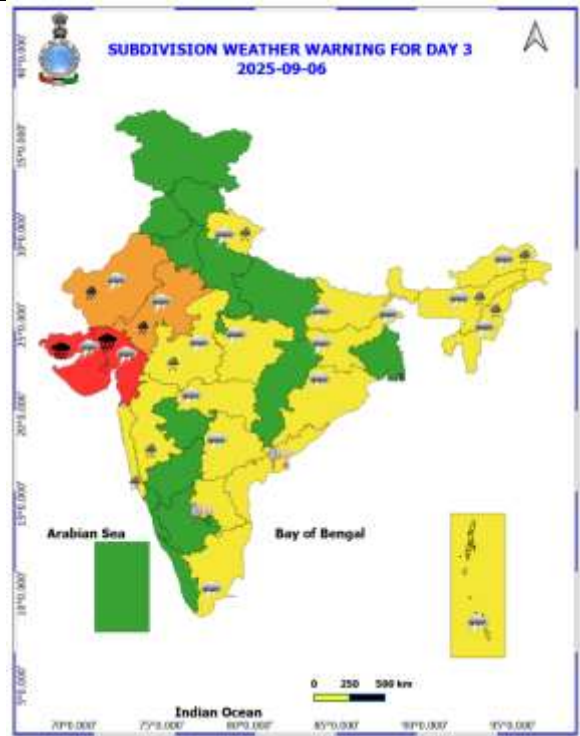
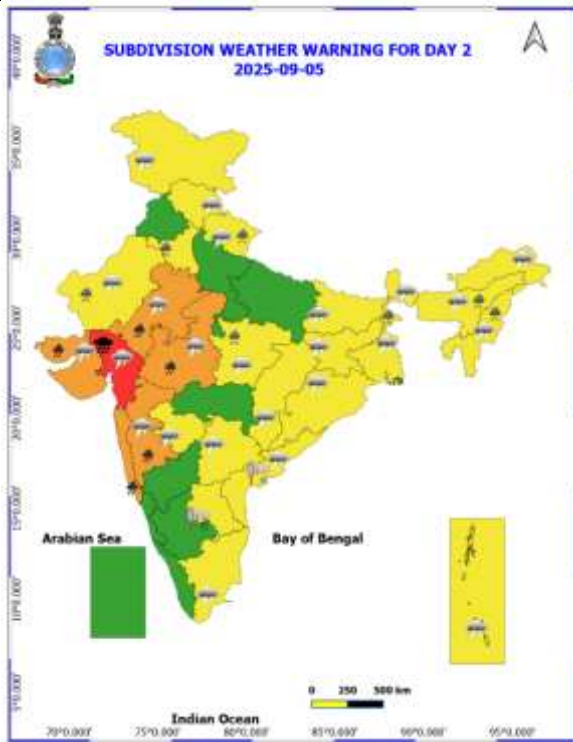
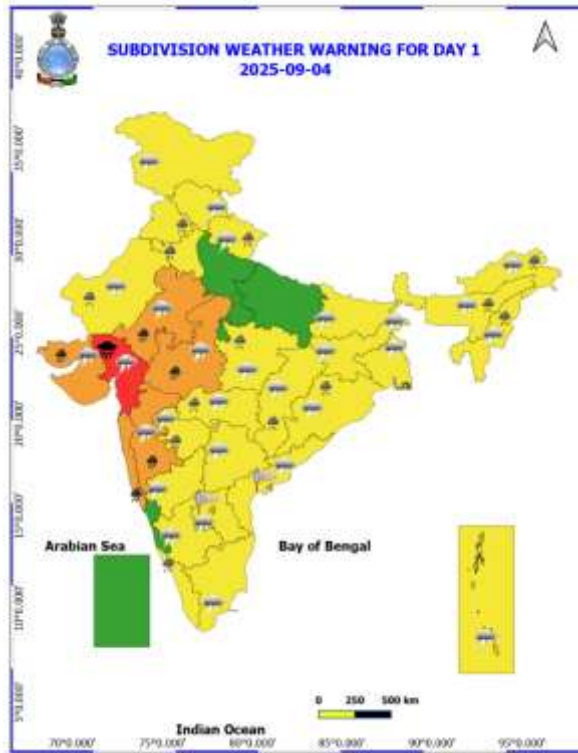
For Fishermen warning refer <https://rsmcnewdelhi.imd.gov.in/fishermen-warning.php>

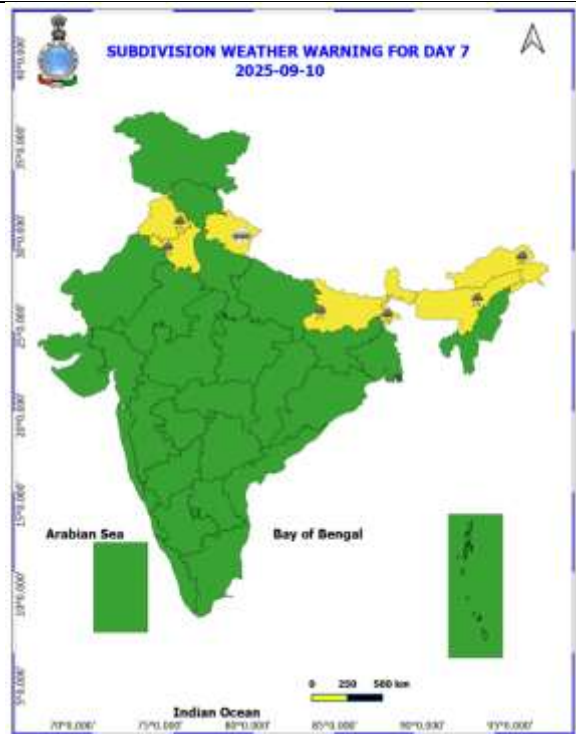
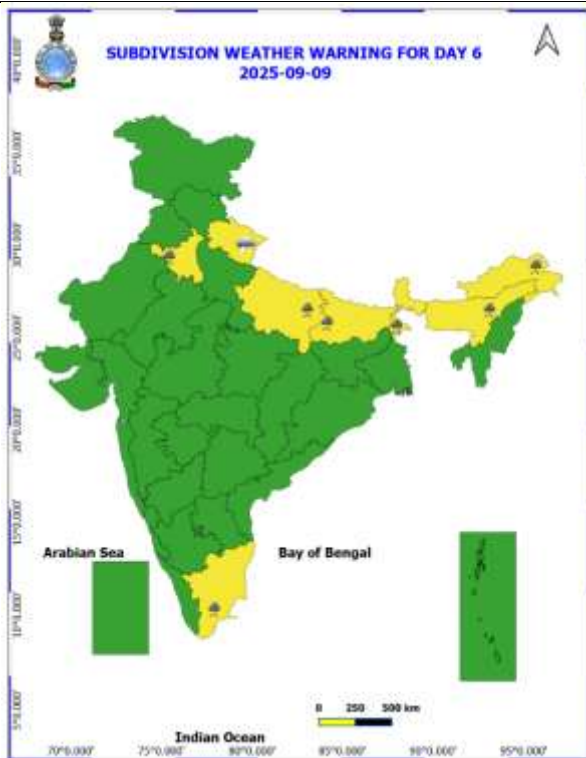
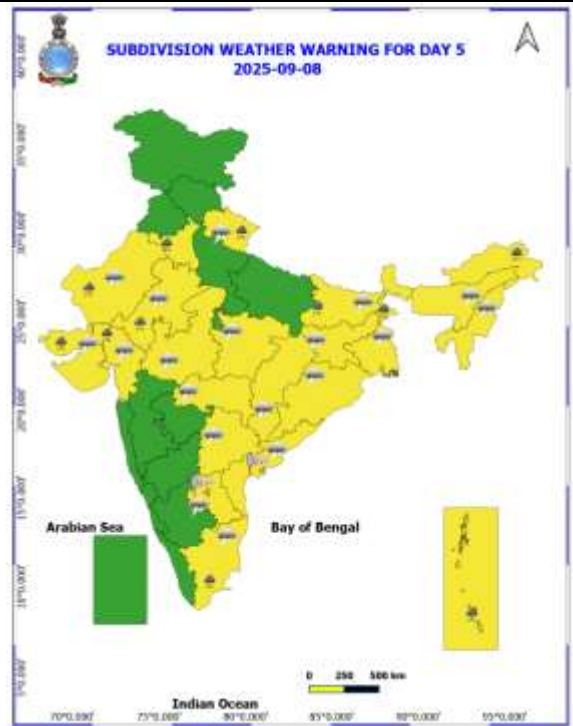
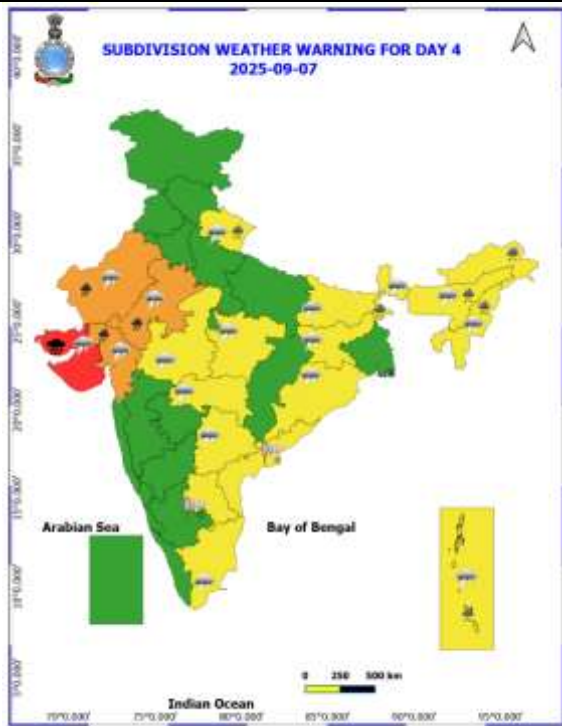
Rainfall recorded (in cm) during past 24 hours till 0830 hours IST of today, the 04th September:

- ❖ **West Madhya Pradesh:** Kumbhraj (dist Guna) 21, Depalpur (dist Indore) 19, Gautampura (dist Indore) 16, Raghogarh (dist Guna) 15, Bhikangaon (dist Khargone) 14, Indore (dist Indore) 12, Hatod (dist Indore) 12, Aron (dist Guna) 11, Udaipura (dist Raisen) 11, Pithampur (dist Dhar) 11, Badnagar (dist Ujjain) 11, Alirajpur (dist Alirajpur) 11, Badnawar (dist Dhar) 11, Ujjain-aws (dist Ujjain) 10, Sanwer (dist Indore) 10, Maksudangarh (dist Guna) 9, Rajgarh (dist Rajgarh) 9, Chachoda (dist Guna) 9, Satwas (dist Dewas) 8, Mhow (dist Indore) 8, Kannod (dist Dewas) 8, Guna-aws (dist Guna) 8, Mau (dist Bhind) 8, Shegaon (dist Khargone) 7, Khachrod (dist Ujjain) 7, Raoti (dist Ratlam) 7, Gulana (dist Shajapur) 7, Raisen-aws (dist Raisen) 7, Gogawan (dist Khargone) 7, Bankhedi (dist Narmadapuram) 7, Jaora (dist Ratlam) 7, Khategaon (dist Dewas) 7, Rama (dist Jhabua) 7, Narsingarh (dist Rajgarh) 7, Tonkhurd (dist Dewas) 7, Sonkatch (dist Dewas) 7;
- ❖ **Odisha:** Laikera (dist Jharsuguda) 21, Sukinda (dist Jajpur) 18, Kirmira (dist Jharsuguda) 17, Kolabira (dist Jharsuguda) 16, Danagadi (dist Jajpur) 16, Chandikhol (dist Jajpur) 15, Deogarh (dist Deogarh) 15, Lakhanpur (dist Jharsuguda) 14, Daitari (dist Keonjhar) 13, Jajpur Pto (dist Jajpur) 12, Jajpur (dist Jajpur) 12, Nh5 Gobindpur (dist Balasore) 11, Kuchinda (dist Sambalpur) 11, Jenapur (dist Jajpur) 11, Banaigarh (dist Sundargarh) 11, Kankadahad (dist Dhenkanal) 11, Korei (dist Jajpur) 11, Dhamnagar (dist Bhadrak) 10, Pallahara (dist Angul) 9, Akhuapada (dist Bhadrak) 9, Ghasipura (dist Keonjhar) 9, Jharsuguda (dist Jharsuguda) 9, Lephripura (dist Sundargarh) 9, Tangarpali (dist Sundargarh) 9, Betanati (dist Mayurbhanj) 9, Chandbali (dist Bhadrak) 9, Harichandanpur (dist Keonjhar) 8, Altuma (dist Dhenkanal) 8, Barkote (dist Deogarh) 8, Kaptipada (dist Mayurbhanj) 8, Kamakhyanager (dist Dhenkanal) 7, Muruda (dist Mayurbhanj) 7, Rasagovindapur (dist Mayurbhanj) 7, Reamal (dist Deogarh) 7, Hatadihi (dist Keonjhar) 7, Deogaon (dist Jharsuguda) 7, Jhorigam (dist Nawarangpur) 7, Bargarh (dist Bargarh) 7, Nawapara (dist Nawapara) 7;
- ❖ **Chhattisgarh:** Patharia (dist Mungeli) 17, Bilha (dist Bilaspur) 11, Bhaisma (dist Korba) 11, Bilaspur (dist Bilaspur) 11, Takhatpur (dist Bilaspur) 10, Bodari (dist Bilaspur) 10, Sakri (dist Bilaspur) 10, Katghora (dist Korba) 9, Malkharoda (dist Sakti) 9, Barpali (dist Korba) 9, Gharghoda (dist Raigarh) 9, Adbhar (dist Sakti) 9, Baloda (dist Janjgir) 9, Lawan (dist Baloda Bazar) 8, Navagarh (dist Janjgir) 8, Darri (dist Korba) 8, Chhal (dist Raigarh) 7, Korba (dist Korba) 7, Mungeli (dist Mungeli) 7, Pali (dist Korba) 7, Hasaud (dist Sakti) 7, Patan (dist Durg) 7, Lalpur Thana (dist Mungeli) 7, Pusaur (dist Raigarh) 7, Dhabhara (dist Sakti) 7;
- ❖ **Jammu-Kashmir:** Katra (dist Reasi) 12, Bakore Arg (dist Jammu) 12, Reasi Arg (dist Reasi) 12, Reasi Kvk Aws (dist Reasi) 11;
- ❖ **Haryana:** Barwala (dist Panchkula) 15, Morni (dist Panchkula) 12, Panchkula (dist Panchkula) 9, Panchkula Aws (dist Panchkula) 8, Saraswati Nagar (dist Yamuna Nagar) 7, Babain Rev (dist Kurukshetra) 7;
- ❖ **East Rajasthan:** Sikrai (dist Dausa) 10, Kherwara (dist Udaipur) 8, Hindoli (dist Bundi) 7, Danpur (dist Banswara) 7;
- ❖ **Gujarat Region:** Nandod (dist Narmada) 10, Umerpada (dist Surat) 9, Jhagadia (dist Bharuch) 8, Rajpipala (dist Narmada) 8, Garudeshwar (dist Narmada) 7, Balasinor (dist Mahisagar) 7, Wanakbori (dist Mahisagar) 7;
- ❖ **Kerala & Mahe:** Taliparamba (dist Cannur) 8, Kozhikode (dist Kozhikode) 7, Padannakkad Aws (dist Kasargod) 7, Taliparamba (dist Cannur) 8, Kozhikode (dist Kozhikode) 7, Padannakkad Aws (dist Kasargod) 7;
- ❖ **East Madhya Pradesh:** Nagode (dist Satna) 8, Sleemanabad (dist Katni) 8, Unchehra (dist Satna) 7, Devendranagar (dist Panna) 7;
- ❖ **South Interior Karnataka:** Agumbe Aws (dist Shivamogga) 7;
- ❖ **Himachal Pradesh:** Dharampur (dist Solan) 7, Karsog (dist Mandi) 7, Kasauli (dist Solan) 7;
- ❖ **Uttarakhand:** Yamunotri (Jan ki chatti) 7;
- ❖ **West Uttar Pradesh:** Hasanpur (dist Amroha) 7;
- ❖ **Arunachal Pradesh:** Jung_arg (dist Tawang) 7.

Table-1								
7 Days Rainfall Forecast								
S.No.	Subdivision	4- Sep	5- Sep	6- Sep	7- Sep	8- Sep	9- Sep	10- Sep
		Day 1	Day 2	Day 3	Day 4	Day 5	Day 6	Day 7
1	ANDAMAN & NICOBAR ISLANDS	WS	WS	WS	WS	WS	WS	WS
2	ARUNACHAL PRADESH	SCT	SCT	SCT	FWS	FWS	FWS	FWS
3	ASSAM & MEHGHALAYA	SCT	FWS	FWS	FWS	FWS	FWS	FWS
4	NAGALAND, MANIPUR, MIZORAM AND TRIPURA	FWS	FWS	FWS	FWS	SCT	SCT	SCT
5	SUB HIMALAYAN WEST BENGAL & SIKKIM	FWS	FWS	FWS	WS	WS	WS	WS
6	GANGETIC WEST BENGAL	FWS	SCT	SCT	SCT	FWS	FWS	SCT
7	ODISHA	FWS	FWS	SCT	SCT	SCT	SCT	SCT
8	JHARKHAND	FWS	FWS	SCT	SCT	FWS	FWS	FWS
9	BIHAR	SCT	ISOL	ISOL	SCT	FWS	FWS	FWS
10	EAST UTTAR PRADESH	SCT	ISOL	ISOL	SCT	SCT	SCT	SCT
11	WEST UTTAR PRADESH	SCT	SCT	ISOL	ISOL	ISOL	ISOL	SCT
12	UTTARAKHAND	FWS	FWS	FWS	FWS	FWS	FWS	FWS
13	HARYANA, CHANDIGARH & DELHI	FWS	FWS	SCT	SCT	SCT	SCT	SCT
14	PUNJAB	FWS	ISOL	ISOL	ISOL	SCT	SCT	SCT
15	HIMACHAL PRADESH	FWS	SCT	SCT	SCT	SCT	SCT	SCT
16	JAMMU AND KASHMIR AND LADAKH	SCT	ISOL	SCT	ISOL	SCT	SCT	ISOL
17	WEST RAJASTHAN	SCT	SCT	FWS	FWS	SCT	ISOL	ISOL
18	EAST RAJASTHAN	FWS	WS	FWS	FWS	SCT	SCT	SCT
19	WEST MADHYA PRADESH	WS	WS	FWS	SCT	SCT	SCT	SCT
20	EAST MADHYA PRADESH	WS	FWS	FWS	FWS	FWS	SCT	SCT
21	GUJRAT REGION	WS	WS	WS	WS	WS	SCT	SCT
22	SAURASHTRA & KUTCH	FWS	WS	WS	WS	WS	FWS	FWS
23	KONKAN & GOA	WS	WS	WS	WS	WS	WS	WS
24	MADHYA MAHARASHTRA	FWS	FWS	SCT	SCT	ISOL	ISOL	ISOL
25	MARATHWADA	FWS	SCT	ISOL	ISOL	ISOL	ISOL	ISOL
26	VIDARBHA	FWS	FWS	SCT	SCT	SCT	FWS	FWS
27	CHHATTISGARH	FWS	FWS	SCT	SCT	FWS	FWS	FWS
28	COASTAL ANDHRA PRADESH	SCT	SCT	ISOL	ISOL	ISOL	SCT	SCT
29	TELANGANA	SCT	ISOL	ISOL	ISOL	ISOL	ISOL	SCT
30	RAYALASEEMA	ISOL	ISOL	ISOL	ISOL	ISOL	ISOL	ISOL
31	TAMILNADU & PUDUCHERRY	ISOL	ISOL	ISOL	ISOL	SCT	SCT	SCT
32	COSTAL KARNATAKA	WS	WS	WS	FWS	FWS	SCT	SCT
33	NORTH INTERIOR KARNATAKA	SCT	SCT	ISOL	ISOL	ISOL	ISOL	SCT
34	SOUTH INTERIOR KARNATAKA	FWS	SCT	SCT	FWS	FWS	FWS	FWS
35	KERALA AND MAHE	WS	FWS	SCT	SCT	FWS	WS	WS
36	LAKSHADWEEP	FWS	SCT	SCT	SCT	SCT	SCT	SCT

- As the lead period increases forecast accuracy decrease.





- Action may be taken based on ORANGE AND REDCOLOUR warnings.
- Vulnerable regions likely urban and hilly areas action may be initiated for heavy rainfall warning.
- As the lead period increases forecast accuracy decreases.

Detailed districtwise Multi Hazard weather warning for next five days available at <https://mausam.imd.gov.in/responsive/districtWiseWarningGIS.php>

Weather forecast over Delhi/NCR during 04th to 07th September 2025

Past Weather:

There has been no large change in the minimum temperature and rise in maximum temperature up to 1 - 2°C over Delhi/NCR during the past 24 hours. The maximum and minimum temperatures over Delhi were around 30 to 32°C and 21 to 24°C respectively. The minimum temperature was below normal up to 2 - 3°C and maximum temperature was below normal up to 2 - 3°C. Generally cloudy sky conditions with predominant surface wind from the east direction with wind speeds up to 15 kmph prevailed during the past 24 hours. Light to moderate rain/thundershowers at most places with heavy rain in isolated has been recorded in Delhi. Generally cloudy sky conditions with a wind speed of less than 16 kmph from the east direction prevailed over the region in the forenoon today.

Weather Forecast:

04.09.2025: Generally cloudy sky. One or two spells of very light to light rain/thundershowers like at many places with possibility of moderate rain at isolated places during afternoon/evening. The maximum temperatures over Delhi are likely to be in the range of 32 to 34°C. The maximum temperature will be below normal up to 1 to 2°C. The predominant surface wind will likely be from the east direction with a wind speed of up to 10-15 kmph during the afternoon hours. The wind speed will decrease becoming less than 10 kmph from the northeast direction during the evening and night.

05.09.2025: Generally cloudy sky. One or two spells of very light to light rain/thundershowers like at many places with possibility of moderate rain at few places. The maximum and minimum temperatures over Delhi are likely to be in the range of 32 to 34°C and 22 to 24°C respectively. The minimum temperature will be below normal up to 1 to 2°C and the maximum temperature will be below normal up to 1 to 2°C. The predominant surface wind will likely to be from the northeast direction with a wind speed of up to 15 - 20 kmph during morning hours. The wind speed will gradually increase becoming less than 25 kmph from the southeast direction in the afternoon. The wind speed will decrease becoming less than 15 kmph from the southeast direction during the evening and night.

06.09.2025: Generally cloudy sky. Possibility of one or two spells of very light to light rain/thundershowers. The maximum and minimum temperatures over Delhi are likely to be in the range of 32 to 34°C and 23 to 25°C respectively. The minimum temperature will be below normal up to 1 to 3°C and the maximum temperature will be below normal up to 1 to 2°C. The predominant surface wind will likely to be from the southeast direction with a wind speed of up to 20-25 kmph during morning hours. The wind speed will gradually decrease becoming less than 20 kmph from the southeast direction in the afternoon. The wind speed will decrease becoming less than 18 kmph from the southeast direction during the evening and night.

07.09.2025: Generally cloudy sky. Possibility of one or two spells of very light to light rain/thundershowers. The maximum and minimum temperatures over Delhi are likely to be in the range of 33 to 35°C and 22 to 24°C respectively. The minimum temperature will be below normal up to 2 to 4°C and the maximum temperature will be near normal. The predominant surface wind will likely be from the southeast direction with a wind speed of less than 15 kmph during the morning hours. The wind speed will gradually decrease becoming less than 12 kmph from the southeast direction in the afternoon. The wind speed will decrease becoming less than 10 kmph from the northeast direction during the evening and night.

Impact expected and Action Suggested due to light to moderate rainfall with thundershowers:

- ❖ Damage to standing crops, Minor to major damage to power and communication lines due to breaking of branches, Partial damage to vulnerable structures due to strong winds, Loose objects may fly.
- ❖ People are advised to keep a watch on the weather for worsening conditions and be ready to move to safer places accordingly, stay indoors, close windows & doors and avoid travel if possible, take safe shelters; do not take shelter under trees, do not lie on concrete floors and do not lean against concrete walls, unplug electrical/ electronic appliances, immediately get out of water bodies, keep away from all the objects that conduct electricity.

Impact & Action Suggested due to

- ❖ **Extremely heavy rainfall** at isolated places over Gujarat Region during 04th-06th; Saurashtra & Kutch on 06th & 07th September.
- ❖ **Very heavy rainfall** over West Madhya Pradesh, Konkan & Goa, Madhya Maharashtra, Saurashtra & Kutch on 04th & 05th; East Rajasthan during 04th-07th; West Rajasthan on 06th & 07th; Gujarat Region on 07th September.

Impact Expected

- Localized Flooding of roads, water logging in low lying areas and closure of underpasses mainly in urban areas of the above region.
- Occasional reduction in visibility due to heavy rainfall.
- Disruption of traffic in major cities due to water logging in roads leading to increased travel time.
- Minor damage to kutcha roads.
- Possibilities of damage to vulnerable structure.
- Localized Landslides/Mudslides/landslips/mudslips/landsinks/mudsinks.
- Damage to horticulture and standing crops in some areas due to inundation.
- It may lead to riverine flooding in some river catchments (for riverine flooding please visit Web page of CWC)

Action Suggested

- Check for traffic congestion on your route before leaving for your destination.
- Follow any traffic advisories that are issued in this regard.
- Avoid going to areas that face the water logging problems often.
- Avoid staying in vulnerable structure.

Agromet advisories for likely impact of Heavy / Heavy to Very Heavy / Extremely Heavy Rainfall

- In Gujarat, make arrangements to drain out excess rain water from fields of rice, sugarcane, okra, tuber crops and vegetables in South Gujarat Heavy Rainfall Zone; rice, cotton, pigeon pea and fruit orchards (banana and mango) in South Gujarat Zone; rice, pearl millet, pigeon pea, cotton, soybean, maize and castor in Middle Gujarat Zone; cotton, green gram, black gram, pigeon pea, pearl millet and vegetables in Bhal and Coastal Zone; pulses, groundnut, cotton, soybean and sesame in North Saurashtra Zone and groundnut, cotton, soybean, black gram, green gram, sesame and pigeon pea in South Saurashtra Zone.
- In Rajasthan, make proper drainage arrangements in fields of cotton, maize, soybean and pulses in Sub Humid Southern Plain and Aravali Hill Zone; fields of cotton, maize and soybean in Southern Humid Plain Zone; fields of soybean and pigeon pea in Southeastern Humid Plain Zone and vegetable nurseries and fields of standing crops such as pearl millet, black gram and sesame in Flood Prone Eastern Plain Zone.
- In Madhya Pradesh, provide adequate drainage in fields of soybean, maize and vegetables in Malwa Plateau Zone; maize, soybean, cotton, black gram and vegetables in Jhabua Hills Zone; maize, pulses, soybean, cotton and vegetables in Satpura Plateau Zone and soybean, cotton and vegetables in Nimar Valley Zone.
- In Maharashtra, make arrangements to drain out excess water from fields of rice, finger millet, turmeric, groundnut, vegetables and fruit orchards in Konkan and rice, soybean, cotton, vegetable fields and fruit orchards in *ghat* areas of Madhya Maharashtra.
- In Chhattisgarh, drain out excess water from the field of maize, groundnut, soybean, pigeon pea and vegetables in Chhattisgarh Plain Zone.

- In Odisha, drain out excess rain water from fields of finger millet, pulses, maize, groundnut and vegetables in North Eastern Plateau Zone; rice, maize and vegetables in West Central Table Land Zone; and rice, maize, black gram and vegetables in North Central Plateau Zone.
- In Jammu and Kashmir, drain out excess water from fields of rice, maize, green gram and black gram in Sub Tropical Zone.
- In Uttarakhand, maintain proper drainage channels in fields of finger millet, kidney beans and vegetables in Hill Zone and sugarcane, black gram, green gram, soybean, maize and finger millet in Bhabar and Tarai Zone.
- In Punjab, make arrangements to drain out excess water from fields of cotton and maize in Western Zone.
- In Haryana, make necessary arrangements to drain out excess water from fields of sugarcane, cotton, maize, pearl millet and vegetables in Eastern Zone and cotton, pearl millet, cluster bean and vegetables in Western Zone.

Livestock / Fishery

- Keep the animals inside the shed during heavy rainfall and provide them balanced feed.
- Store feed and fodder in a safe place to prevent spoilage.
- Construct an outlet with proper netting around the ponds to drain out excess water, thereby preventing fish from escaping in case of overflow.

Agromet advisories for likely impact of Thunderstorm / Gusty Winds / Squally Winds

- Provide mechanical support to horticultural crops and staking or support to vegetables and young fruit plants / fruit-bearing plants to avoid lodging due to strong winds.

Flash flood guidance:

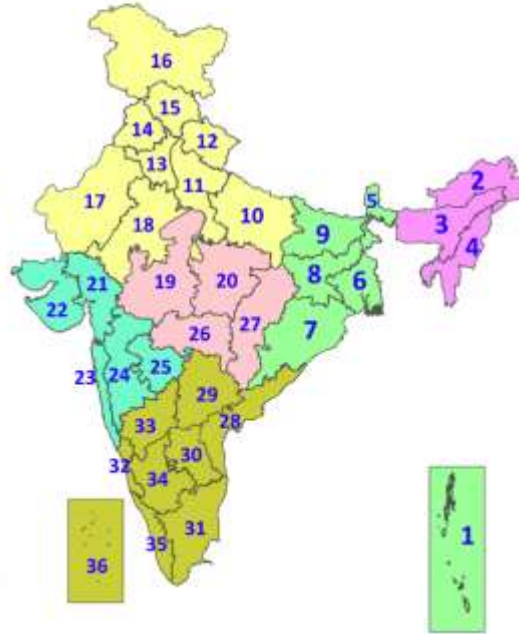
<p>24 hours Outlook for the Flash Flood Risk (FFR) till 1130 IST of 05-09-2025 :</p> <p>Low to Moderate flash flood risk likely over few watersheds & neighbourhoods of following Met Sub-divisions during next 24 hours.</p> <p>Gujarat Region- Chhota Udaipur, Narmada, Surat, Tapi, Navsari and Valsad districts.</p> <p>West Madhya Pradesh- Dhar, Alirajpur, Bharwani and Indore districts</p> <p>Madhya Maharashtra - Nandurbar, Dhule, Nasik and Jalgaon districts</p> <p>East Rajasthan - Pratapgarh, Dungarpur and Banswara districts</p> <p>Surface runoff/ Inundation may occur at some fully saturated soils & low-lying areas over Area of Concern (AoC) as shown in map due to expected rainfall occurrence in next 24 hours.</p>	
---	--

Legends & abbreviations:

- ❖ **Heavy Rain:**64.5-115.5mm; **Very Heavy Rain:**115.6-204.4mm; **Extremely Heavy Rain:** >204.4mm.
- ❖ **Obsy:** Observatory; Automatic Weather Station; **ARG:** Automatic Rain Gauge; **dist:** District; **NH:** National Highway; **KVK:** Krishi Vigyan Kendra; **DVC:** Damodar Valley Corporation; **PTO:** Part Time Office, **Aero:** Aerodrome, **IAF:** Indian Air Force.
- ❖ **Region wise classification of meteorological Sub-Divisions:**
 - **Northwest India:** Western Himalayan Region (Jammu-Kashmir-Ladakh-Gilgit-Baltistan-Muzaffarabad, Himachal Pradesh and Uttarakhand); Punjab, Haryana-Chandigarh-Delhi; West Uttar Pradesh, East Uttar Pradesh, West Rajasthan and East Rajasthan.
 - **Central India:** West Madhya Pradesh, East Madhya Pradesh, Vidarbha and Chhattisgarh.
 - **East India:** Bihar, Jharkhand, Sub-Himalayan West Bengal & Sikkim; Gangetic West Bengal, Odisha and Andaman & Nicobar Islands.
 - **Northeast India:** Arunachal Pradesh, Assam & Meghalaya and Nagaland, Manipur, Mizoram & Tripura.
 - **West India:** Gujarat Region, Saurashtra & Kutch, Konkan & Goa, Madhya Maharashtra and Marathawada.
 - **South India:** Coastal Andhra Pradesh & Yanam, Telangana, Rayalaseema, Coastal Karnataka, North Interior Karnataka, South Interior Karnataka, Kerala & Mahe, Tamil Nadu, Puducherry & Karaikal and Lakshadweep.

LEGENDS

1. अंडमान और निकोबार द्वीपसमूह
2. अरुणाचल प्रदेश
3. असम और मेघालय
4. नागालैंड, मणिपुर, मिजोरम और त्रिपुरा
5. उप-हिमालयी पश्चिम बंगाल और सिक्किम
6. गंगीय पश्चिम बंगाल
7. ओडिशा
8. झारखंड
9. बिहार
10. पूर्वी उत्तर प्रदेश
11. पश्चिम उत्तर प्रदेश
12. उत्तराखंड
13. हरियाणा, चंडीगढ़ और दिल्ली
14. पंजाब
15. हिमाचल प्रदेश
16. जम्मू और कश्मीर और लद्दाख
17. पश्चिम राजस्थान
18. पूर्वी राजस्थान
19. पश्चिम मध्य प्रदेश
20. पूर्वी मध्य प्रदेश
21. गुजरात
22. सौराष्ट्र
23. कोंकण और गोवा
24. मध्य महाराष्ट्र
25. मराठवाड़ा
26. विदर्भ
27. छत्तीसगढ़
28. तटीय आंध्र प्रदेश और यनम
29. तेलंगाना
30. रायलसीमा
31. तमिलनाडु, पुडुचेरी और कराईकल
32. तटीय कर्नाटक
33. आंतरिक उत्तरी कर्नाटक
34. आंतरिक दक्षिणी कर्नाटक
35. केरल और माहे
36. लक्षद्वीप



1. Andaman & Nicobar Islands
2. Arunachal Pradesh
3. Assam & Meghalaya
4. Nagaland, Manipur, Mizoram & Tripura
5. Sub-Himalayan West Bengal & Sikkim
6. Gangetic West Bengal
7. Odisha
8. Jharkhand
9. Bihar
10. East Uttar Pradesh
11. West Uttar Pradesh
12. Uttarakhand
13. Haryana, Chandigarh & Delhi
14. Punjab
15. Himachal Pradesh
16. Jammu & Kashmir and Ladakh
17. West Rajasthan
18. East Rajasthan
19. West Madhya Pradesh
20. East Madhya Pradesh
21. Gujarat
22. Saurashtra
23. Konkan & Goa
24. Madhya Maharashtra
25. Marathwada
26. Vidarbha
27. Chhattisgarh
28. Coastal Andhra Pradesh & Yanam
29. Telangana
30. Rayalaseema
31. Tamilnadu, Puducherry & Karaikal
32. Coastal Karnataka
33. North Interior Karnataka
34. South Interior Karnataka
35. Kerala & Mahe
36. Lakshadweep

SPATIAL DISTRIBUTION (% of Stations reporting)

% Stations	Category	% Stations	Category
76-100	Widespread (WS/Most Places)	26-50	Scattered (SCT/A Few Places)
51-75	Fairly Widespread (FWS/Many Places)	1-25	Isolated (ISOL)

- | | | |
|----------------------|----------------------|--------------|
| Fog | Heavy Snow | Cold Wave |
| Heavy Rain | Dust Storm | Cold Day |
| Very Heavy Rain | Heat Wave | Ground Frost |
| Extremely Heavy Rain | Warm Night | |
| Thunder & Lightning | Hot Day | |
| Hailstorm | Hot & Humid | |
| Dust Raising Winds | Strong Surface Winds | |

COLOUR CODED WARNING

- No Warning (No Action)
- Watch (Be Aware)
- Alert (Be Prepared To Take Action)
- Warning (Take Action)

Probabilistic Forecast

Terms	Probability of Occurrence (%)
Unlikely	< 25
Likely	25 - 50
Very Likely	50 - 75
Most Likely	> 75

DEFINITION/CRITERIA

Rain/ Snow *	<p>Heavy: 64.5 to 115.5 mm/cm *</p> <p>Very Heavy: 115.6 to 204.4 mm/cm*</p> <p>Extremely Heavy: > 204.4 mm/cm *</p>
Heat Wave	<p>When maximum temperature of a station reaches $\geq 40^{\circ}\text{C}$ for plains and $\geq 30^{\circ}\text{C}$ for hilly regions</p> <p>(a) Based on Departure from normal</p> <p>Heat Wave: Maximum Temperature Departure from normal 4.5°C to 6.4°C.</p> <p>Severe Heat Wave: Maximum Temperature Departure from normal $\geq 6.5^{\circ}\text{C}$</p> <p>(b) Based on Actual maximum temperature</p> <p>Heat Wave: When actual maximum temperature $\geq 45^{\circ}\text{C}$.</p> <p>Severe Heat Wave: When actual maximum temperature $\geq 47^{\circ}\text{C}$</p> <p>(c) Criteria for heat wave for coastal stations</p> <p>When maximum temperature departure is $> 4.5^{\circ}\text{C}$ from normal. Heat Wave may be described provided maximum temperature $\geq 37^{\circ}\text{C}$.</p>
Warm Night	<p>When maximum temperature remains 40°C</p> <p>Warm Night: When minimum temperature departure 4.5°C to 6.4°C.</p> <p>Severe Warm Night: When minimum temperature departure $> 6.4^{\circ}\text{C}$.</p>
Cold Wave	<p>When minimum temperature of a station $\leq 10^{\circ}\text{C}$ for plains and $\leq 0^{\circ}\text{C}$ for hilly regions.</p> <p>(a) Based on departure</p> <p>Cold Wave: Minimum Temperature Departure from normal -4.5°C to -6.4°C.</p> <p>Severe Cold Wave: Minimum Temperature Departure from normal $\leq -6.5^{\circ}\text{C}$</p> <p>(b) Based on actual Minimum Temperature (for Plains only)</p> <p>Cold Wave : When Minimum Temperature is $\leq 4.0^{\circ}\text{C}$</p> <p>Severe Cold Wave: When Minimum Temperature is $\leq 2.0^{\circ}\text{C}$</p> <p>(c) For Coastal Stations</p> <p>When Minimum Temperature departure is $\leq -4.5^{\circ}\text{C}$ & actual Minimum Temperature is $\leq 15^{\circ}\text{C}$</p>
Cold Day	<p>When minimum temperature of a station $\leq 10^{\circ}\text{C}$ for plains and $\leq 0^{\circ}\text{C}$ for hilly regions</p> <p>Based on departure</p> <p>Cold Day: Maximum Temperature Departure from normal -4.5°C to -6.4°C.</p> <p>Severe Cold Day: Maximum Temperature Departure from normal $\leq -6.5^{\circ}\text{C}$</p>
Fog	<p>Phenomenon of small droplets suspended in air and the horizontal visibility $< 1\text{km}$</p> <p>Moderate Fog: When the visibility between 500-200 metres</p> <p>Dense Fog: when the visibility between 50- 200 metres</p> <p>Very Dense Fog: when the visibility < 50 metres</p>
Thunderstorm	<p>Sudden electrical discharges manifested by a flash of light (Lightning) and a sharp rumbling sound (thunder)</p>
Dust/Sand Storm	<p>An ensemble of particles of dust or sand energetically lifted to great heights by a strong and turbulent wind.</p>
Frost	<p>Ice deposits on ground</p> <p>Air temperature $\leq 4^{\circ}\text{C}$ (over Plains)</p>
Squall	<p>A strong wind that rises suddenly, lasts for atleast 1 minute.</p> <p>Moderate: Wind speed 52-61 kmph</p> <p>Severe: Wind speed 62-67 kmph</p> <p>Very Severe: Wind speed > 67 kmph</p>
Sea State	<p>Effect of various waves in the sea over specific area</p> <p>Rough to very rough: Wind speed 41-62 kmph (22-33 knots) & Wave height 2.5-6 metre</p> <p>High to very high: Wind speed 63-117 kmph (34-63 knots) & Wave height 6-14 metre</p> <p>Phenomenal: Wind speed > 117 kmph (> 63 knots) & Wave height > 14 metre</p>
Cyclone	<p>Cyclonic Storm: Wind speed 62-67 kmph (34-47 knots)</p> <p>Severe Cyclonic Storm: Wind speed 88-117 kmph (48-63 knots)</p> <p>Very Severe Cyclonic Storm: Wind speed 118-165 kmph (64 - 89 knots)</p> <p>Extremely Severe Cyclonic Storm: Wind speed 166-220 kmph (90 -119 knots)</p> <p>Super Cyclone Storm: Wind speed > 220 kmph (> 119 knots)</p>

* Red colour warning does not mean "Red Alert", Red colour warning means "Take Action".
Forecast and Warning for any day is valid from 0830 hours IST of day till 0830 hours IST of next day.
For more details, kindly visit <https://mausam.imd.gov.in> or contact: 011-2434-4599
(Service to the Nation since 1875)

Hot and Humid: When maximum temperatures remain 3°C above normal along with the above normal relative humidity.